

Fine Pitch DV-LED Video Walls

138" | 165"



ALL-IN-ONE
1080p SOLUTION



Versatile giant all-in-one direct view LED screen. Integrated Android and speakers create a big impact

All-in-One DV-LED Display

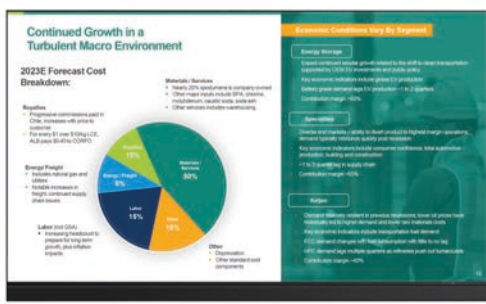
The Fine Pitch DV-LED Video Walls combine the best quality LED technology on the market with a sophisticated Android based PC. This provides an integrated solution for most cases without the need for messy cables or additional devices.



Android PC



Speakers



HD
1920x1080
Resolution



Front Access Ports

Powerful Integrated Soundbar

The display features two 30W high quality integrated speakers, adding crystal clear audio to the stunning visuals for a truly immersive experience. Finely tuned by sound engineers the speakers are ready to go out of the box. Integrated neatly into the screen the speakers offer an impressive listening experience.



Integrated Android 9 PC



7mm Ultra Thin Frame



Quick install



No Bezel Display

16:9

True 16:9 Aspect Ratio



Wireless Mirroring



Lightweight Display



Optional Floor Stand



3 Year Warranty



Lifetime technical support

Other Features

Easy Installation

Installation of the Fine Pitch LED Presentation Video Wall is quick and easy thanks to its light and compact design. Unlike other LED Video Walls this solution is a complete out-of-the-box display so assembly is much easier than usual. It also comes fully colour celebrated.



Lightweight and Slim Design

Despite their large size the Fine Pitch DV-LED Video Walls have a compact design with a slim depth of just 31mm and a lightweight cabinet for reduced stress on the mounting wall.

31mm Depth
138" **165"**
135Kg **190Kg**



Easy Access Front Ports

The Fine Pitch LED Video Wall has a variety of easy to access controls and ports on the front of the display including a HDMI and 2 x USB ports.



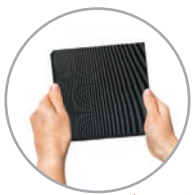
Adjustable Brightness

The Fine Pitch LED Presentation Video Wall is bright enough for all ambient lighting conditions, but the screen can be adjusted manually to suit user preferences. If your conference or meeting room is quite dark then you can reduce the backlight brightness to improve overall readability.



Easy Front Maintenance

Through an intuitive and easy-to-use maintenance system the LED Video Wall can be serviced from the front of the display. The LED modules can be removed quickly and efficiently for convenient maintenance.



Wireless Mirroring

During meetings or presentations you can wirelessly mirror and file share between your devices and the display. Featuring easy access front ports for connecting your laptop, remote video conferencing and multi-window splicing for maximum user engagement.



Versatile Remote Control

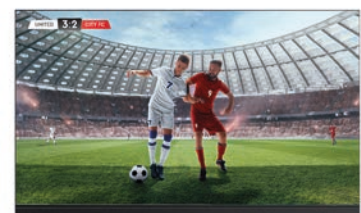
Alongside the wireless mirroring the handy remote control allows users to switch the source of the screen and adjust the volume and brightness with no hassle.



Wide Viewing Angle

Thanks to the LED technology these displays provide fantastic image quality with a remarkable viewing angle of 160°.

160°
Viewing Angle



Key Features



SMD TECHNOLOGY



SLIM/LIGHTWEIGHT DISPLAY



PROTECTIVE EDGE



HD DISPLAY



FABRIC COVER

INTEGRATED ANDROID 9 PC

SEAMLESS VIDEO WALL

EASY ACCESS FRONT PORTS



ALL-IN-ONE DISPLAY



INTEGRATED SOUNDBAR



EASY FRONT MAINTENANCE



ADJUSTABLE BRIGHTNESS

Continued Growth in a Turbulent Macro Environment

2023E Forecast Cost Breakdown:

Category	Percentage
Materials	15%
Manufacturing	55%
Logistics	10%
Other	20%

INTEGRATED SOUNDBAR

EASY FRONT MAINTENANCE

ADJUSTABLE BRIGHTNESS

Specification Table

		138 inch	165 inch
LED	Pixel Pitch (mm)	1.5	1.9
	Resolution	1920x1080	
	Display Area (mm)	3050x1715	3660x2058
	Aspect Ratio	16:9	
	Brightness (cd/m ²)	100~550	
	Refresh Rate (Hz)	1920~3840	
	Grayscale	13~16 Bit	
	Viewing Angle	170°	
	Contrast Ratio	6500:1	
	Maintenance	Front Access Only	
Audio	Speakers	2x30W	
AV Ports	Front Ports	USB 2.0 x 2, USB Type-C, HDMI, 3.5 Audio Output	
Power	Input Voltage	AC110~240V (50Hz~60Hz)	
	Standby Power Consumption	≤0.5W	
	Average Power Consumption	640W	830W
	Maximum Power Consumption	1870W	2,460W
Mechanical	Unit Size (WxHxD mm)	3064x1832x31	3674x2175x31
	Package Size (WxHxD mm)	TBC	TBC
	Net Weight	135Kg	190Kg
	Gross Weight (kg)	TBC	TBC
Environmental	Operating Temperature	-10°C to 40 °C	
	Operating Humidity	10% to 80%	
Computer	CPU	ARM Cortex A72, Cortex A53, 2.0GHz	
	GPU	ARM Mali-T860 MP4	
	Memory	4GB	
	Storage	32Gb	
	LAN	100M/1000M	
	Wi-Fi	802.11ac	
	OS	Android 9	
Accessories	Included	Remote Control, Front Maintenance Tool, Tool Kit, Wall Mount	
	Optional	Floor Stand	
Warranty	Warranty Period	3 Year Warranty	
	Technical Support	Lifetime	

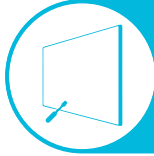


Why Choose Our Commercial Display Solutions?



Lifetime Technical Support

From the moment you receive your product, throughout the duration of your warranty and even after your warranty has expired we are here to support you. If you require any assistance setting up or using your product, or have any problems at all, we can provide free technical support via telephone and email.



On-site Support and Maintenance*

If needed, we can provide an installation service for any of our products. We can also set up service-level agreements for larger projects that require maintenance contracts.



Extended Warranty*

All of our commercial display products come with a 3 year commercial warranty as standard but if you want to extend this you can upgrade this to cover a 5 year period at point of purchase.



Training

As well as providing free remote CMS training sessions and webinars we can also visit you to deliver bespoke training for our software and hardware*.



Advanced Replacements†

Should your display suffer from any kind of hardware failure during the warranty period we will send you an advanced replacement and arrange for your old display to be collected, free of charge. This ensures no downtime where you are without a screen.



Custom Product Testing & Configuration

If you need us to test third party software or a website, or configure your screen in a particular way before it is dispatched (e.g. in a particular orientation or network mode), we can do so to make your life easier.



3D Rendering

Want to know how a particular screen will look once installed? Send us a photo of the location and we will create a 3D rendering of any screen in situ to help you to visualise how amazing it will look.



Logistics Support

We hold more stock in our UK warehouse than any other manufacturer so we can help you meet tight deadlines. For last minute orders we can also offer special express or morning delivery options*. We also carry out UK based quality control checks on every display before it leaves our warehouse.



Project Support

If you need to loan a sample unit to test we'd be more than happy to arrange this. We can also provide a rental service for temporary projects*.



Customisation*

Your display can be customised to suit your requirements by adding your logo or printed graphics or even tailoring the colour of a display. We can also carry out hardware modifications to existing products or manufacture bespoke solutions for special projects.



Extras*

As well as being able to provide accessories and add-ons, such as extra remote controls, NUC PCs and video wall controllers, we can also supply custom made flight cases which are great if a display needs to be moved safely from place to place.

†UK mainland only

*These particular services may incur additional charges